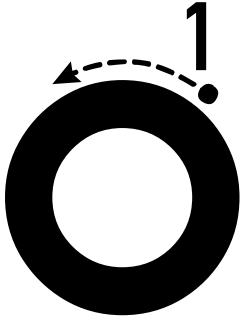
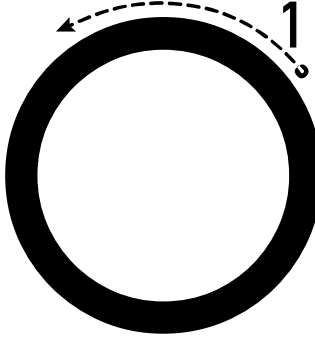


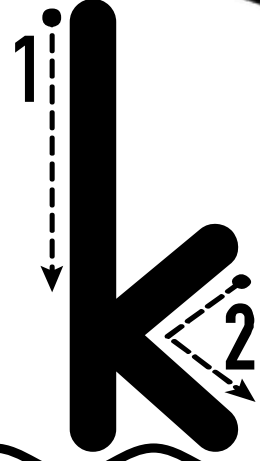
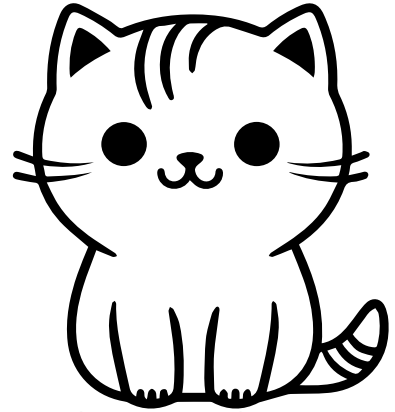
1

A large uppercase letter 'O' with a dashed line and an arrow indicating a single counter-clockwise stroke starting from the top right, labeled with the number '1'.

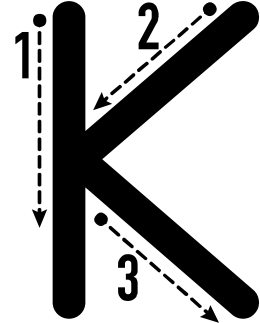
1

A large uppercase letter 'O' with a dashed line and an arrow indicating a single counter-clockwise stroke starting from the top right, labeled with the number '1'.

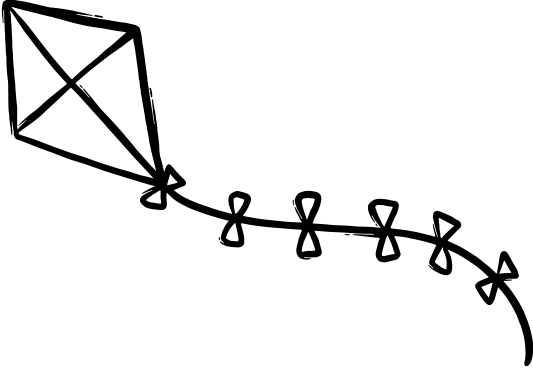
1 2

A large uppercase letter 'K' with two stroke order guides. Stroke 1 is a vertical line down from top to bottom, labeled '1'. Stroke 2 is a diagonal line from the top right to the middle of the vertical line, then another diagonal line from the middle to the bottom right, labeled '2'.

1 2 3

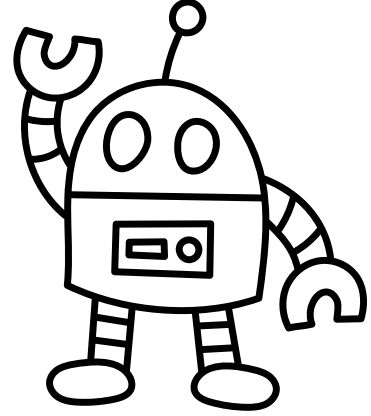
A large uppercase letter 'K' with three stroke order guides. Stroke 1 is a vertical line down from top to bottom, labeled '1'. Stroke 2 is a diagonal line from the top right to the middle of the vertical line, labeled '2'. Stroke 3 is a diagonal line from the middle of the vertical line to the bottom right, labeled '3'.

u



u

r



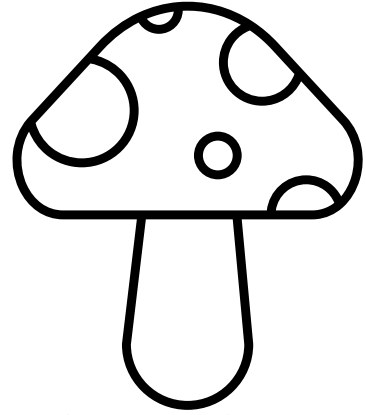
R

1



1

m



1 2 3 4